

Student Safety Zones

City of Big Rapids

Big Rapids, Michigan United States

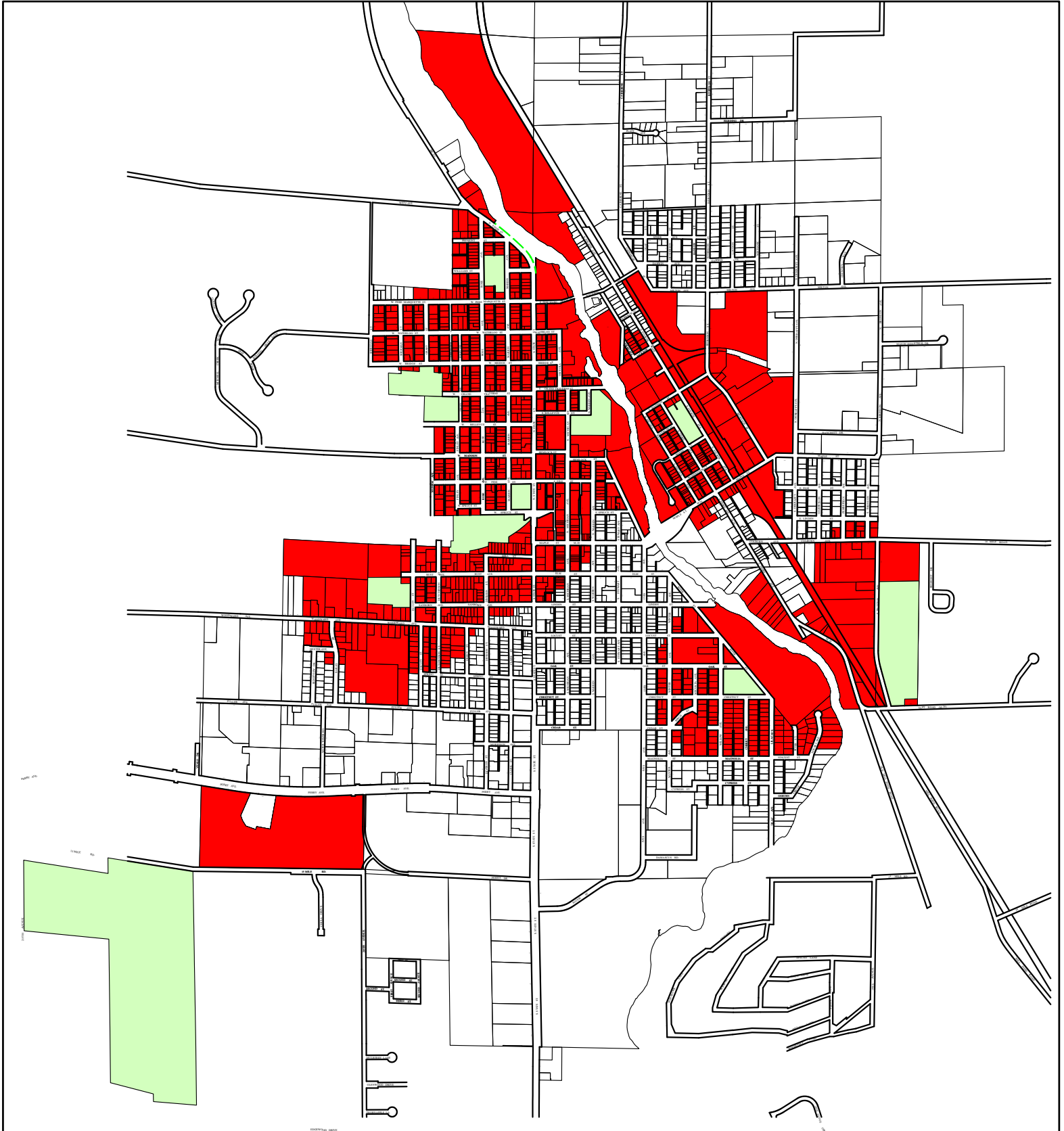
Public Act 295 of 1994 created the **Sex Offender Registry** and requires Persons convicted of certain sex offenses to be listed on the Registry in order to allow our communities to be aware of potential hazards to the safety of our children. Section 28.734 and 28.735 prohibit individuals listed on the Registry (with some exceptions) from loitering, residing, or working within a "**Student Safety Zone**". A Student Safety Zone is defined in the statute as "the area that lies 1,000 feet or less from school property." "**School**" is further defined as a public, private, denominational, or parochial school offering developmental kindergarten, kindergarten, or any grade from 1 through 12. School does not include a home school. "School Property" means a building, facility, structure, or real property owned, leased, or otherwise controlled by a school (except those owned or leased by a school but no longer used) for the purpose of imparting educational instruction or used by students no more than 19 years of age for sports or other recreational activities.



If you have reason to believe that a sex offender is loitering within a prohibited area or otherwise presents an immediate threat to a child, please call 9-1-1. If you believe that a sex offender is residing or working in a prohibited area, please call the Big Rapids Public Safety at (231) 527-0005 with your information (voicemail after business hours) so that an investigation can be conducted.

Student Safety Zones City of Big Rapids

Big Rapids, Michigan United States

Michigan law prohibits a person who has committed a sexual offense from living, working, or loitering within 1000 feet of a public or private elementary or secondary school (exceptions do exist please see section 28.734 of Act 295 of the Michigan Sex Offender Registration Act). These restrictions apply during the twenty-five years an offender is on the Sex Offender Registry.

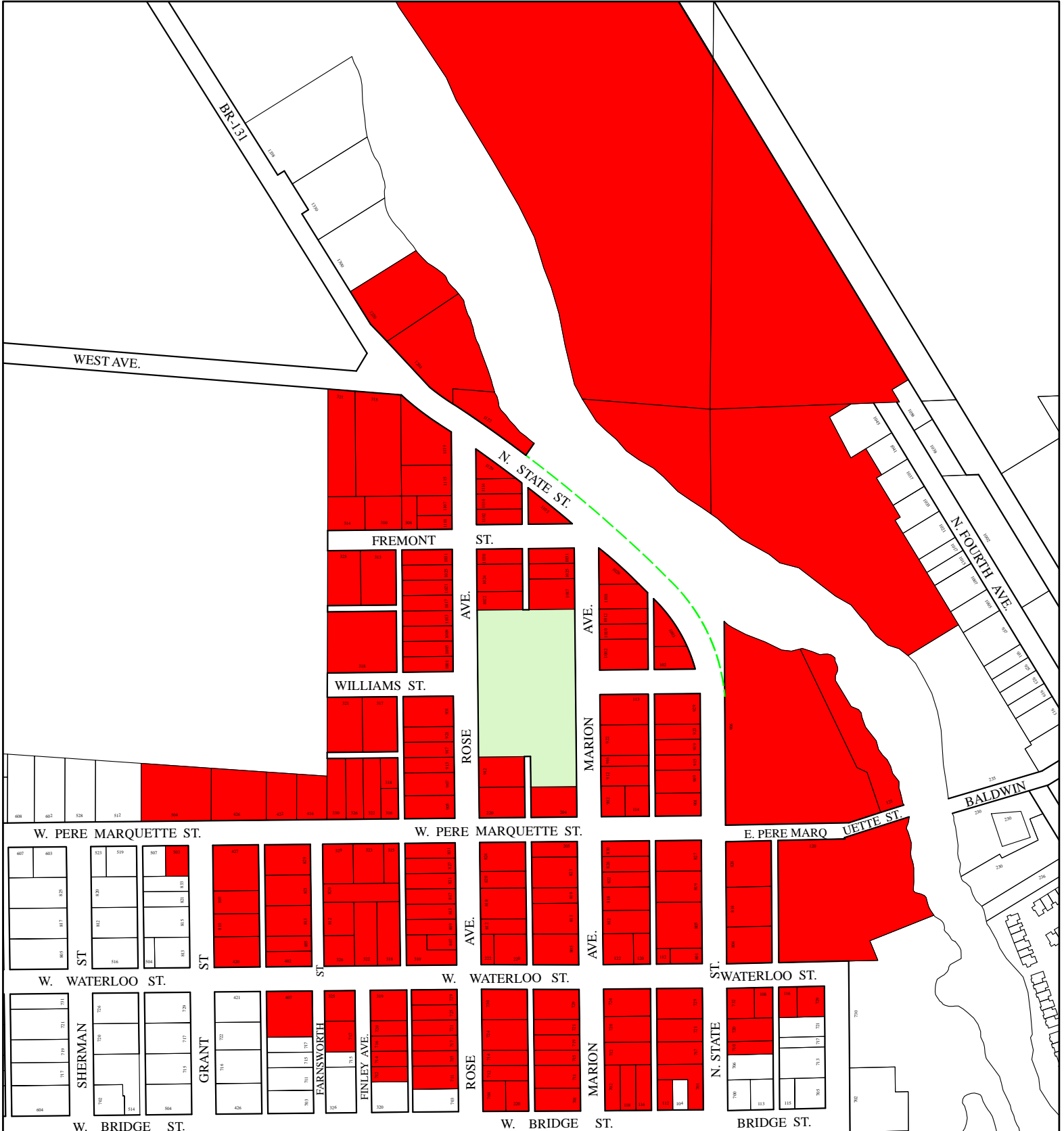




-  Red highlight represents 1000' radius from the edge of the school's parcel boundary
-  Green represents school property

Student Safety Zones St. Mary's Catholic School

927 Marion Avenue Big Rapids, Michigan 49307

Michigan law prohibits a person who has committed a sexual offense from living, working, or loitering within 1000 feet of a public or private elementary or secondary school (exceptions do exist please see section 28.734 of Act 295 of the Michigan Sex Offender Registration Act). These restrictions apply during the twenty-five years an offender is on the Sex Offender Registry.

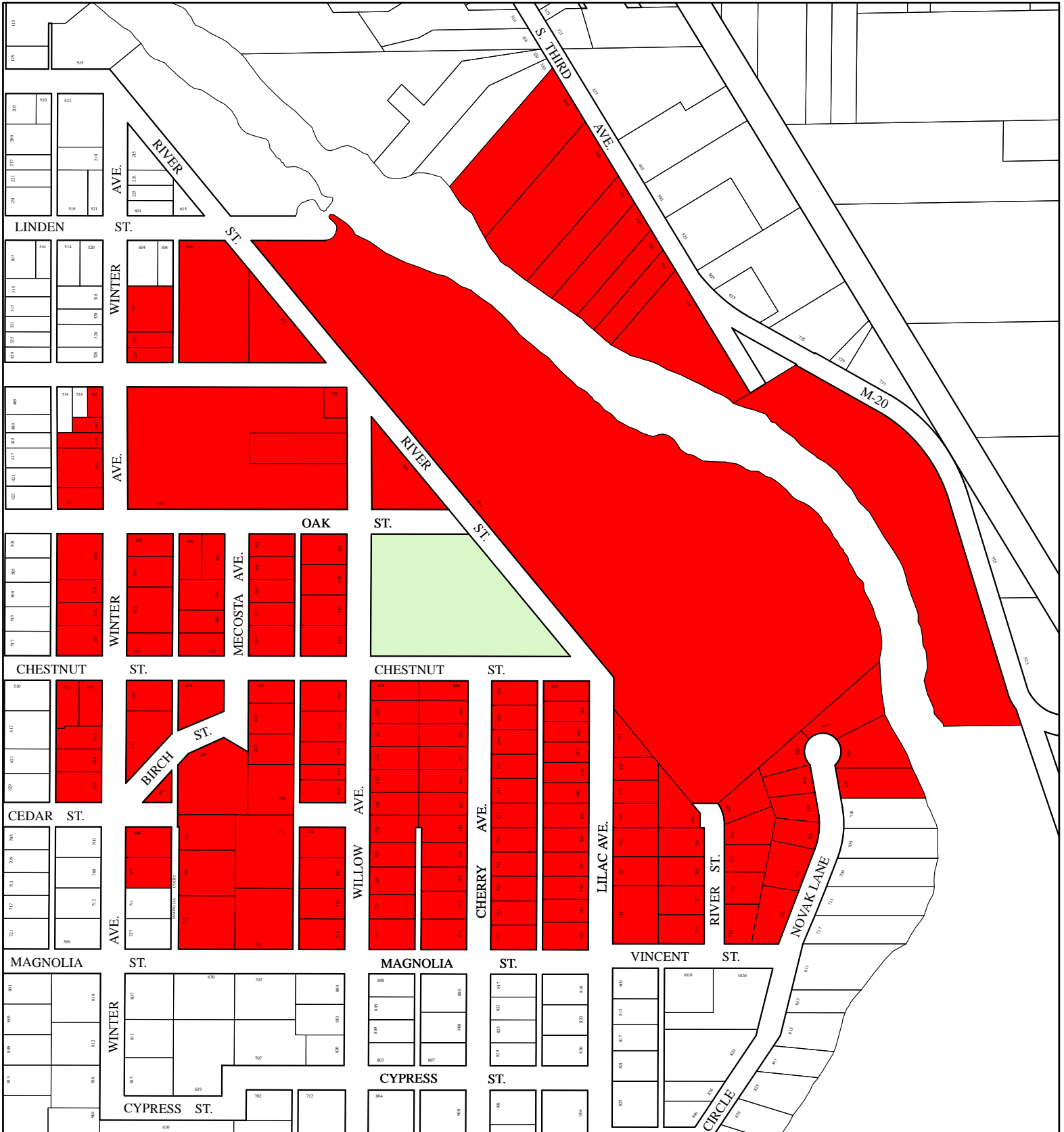


-  Red highlight represents 1000' radius from the edge of the school's parcel boundary
-  Green represents school property

Student Safety Zones Riverview Elementary School

509 Willow Street Big Rapids, Michigan 49307

Michigan law prohibits a person who has committed a sexual offense from living, working, or loitering within 1000 feet of a public or private elementary or secondary school (exceptions do exist please see section 28.734 of Act 295 of the Michigan Sex Offender Registration Act). These restrictions apply during the twenty-five years an offender is on the Sex Offender Registry.



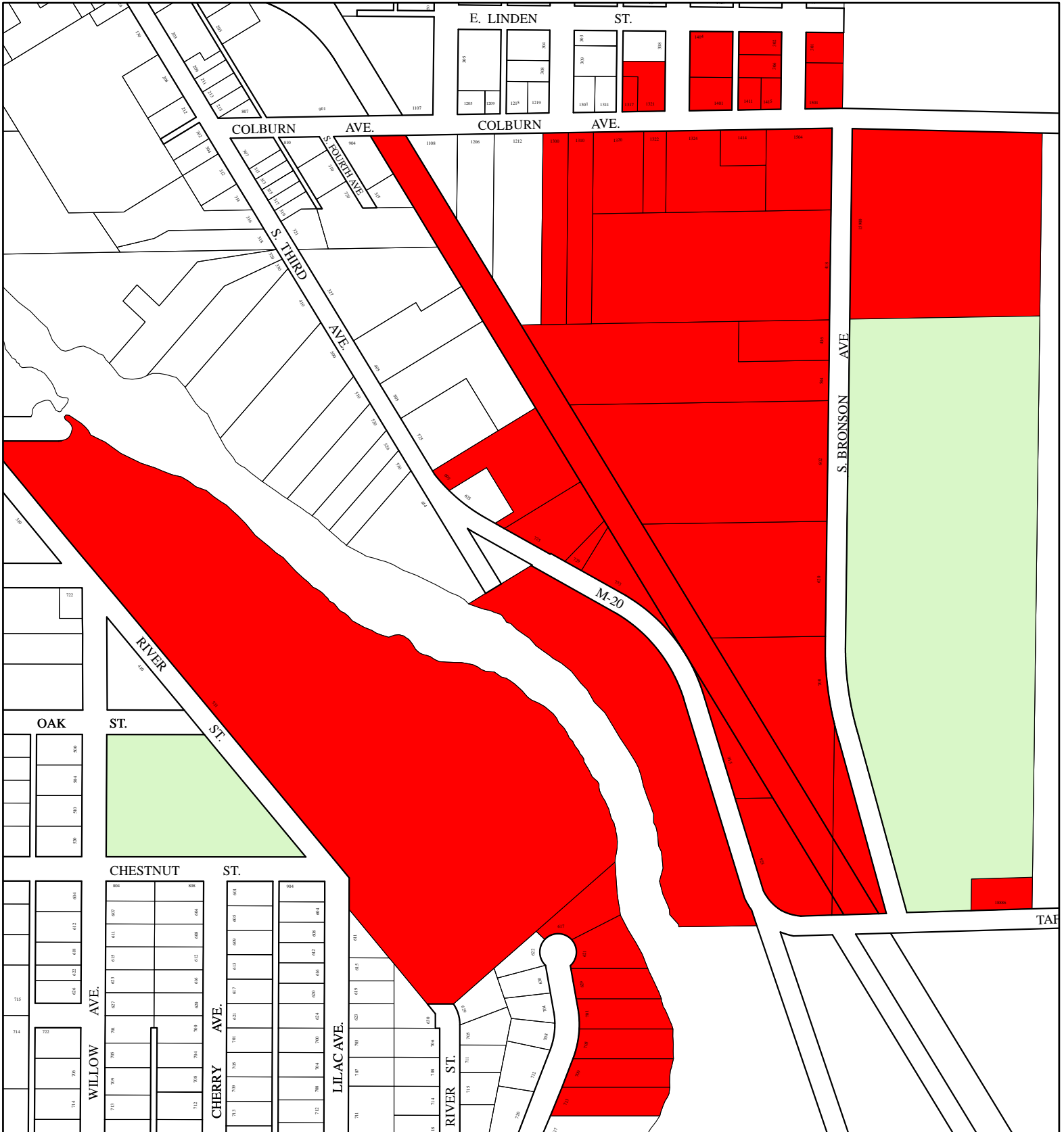
- Red highlight represents 1000' radius from the edge of the school's parcel boundary
- Green represents school property



Student Safety Zones

Mecosta-Osceola Intermediate School District

15760 190th Avenue Big Rapids, Michigan 49307

Michigan law prohibits a person who has committed a sexual offense from living, working, or loitering within 1000 feet of a public or private elementary or secondary school (exceptions do exist please see section 28.734 of Act 295 of the Michigan Sex Offender Registration Act). These restrictions apply during the twenty-five years an offender is on the Sex Offender Registry.



-  Red highlight represents 1000' radius from the edge of the school's parcel boundary
-  Green represents school property

Student Safety Zones

Hillcrest Elementary School

501 West Bridge Street Big Rapids, Michigan 49307

Michigan law prohibits a person who has committed a sexual offense from living, working, or loitering within 1000 feet of a public or private elementary or secondary school (exceptions do exist please see section 28.734 of Act 295 of the Michigan Sex Offender Registration Act). These restrictions apply during the twenty-five years an offender is on the Sex Offender Registry.

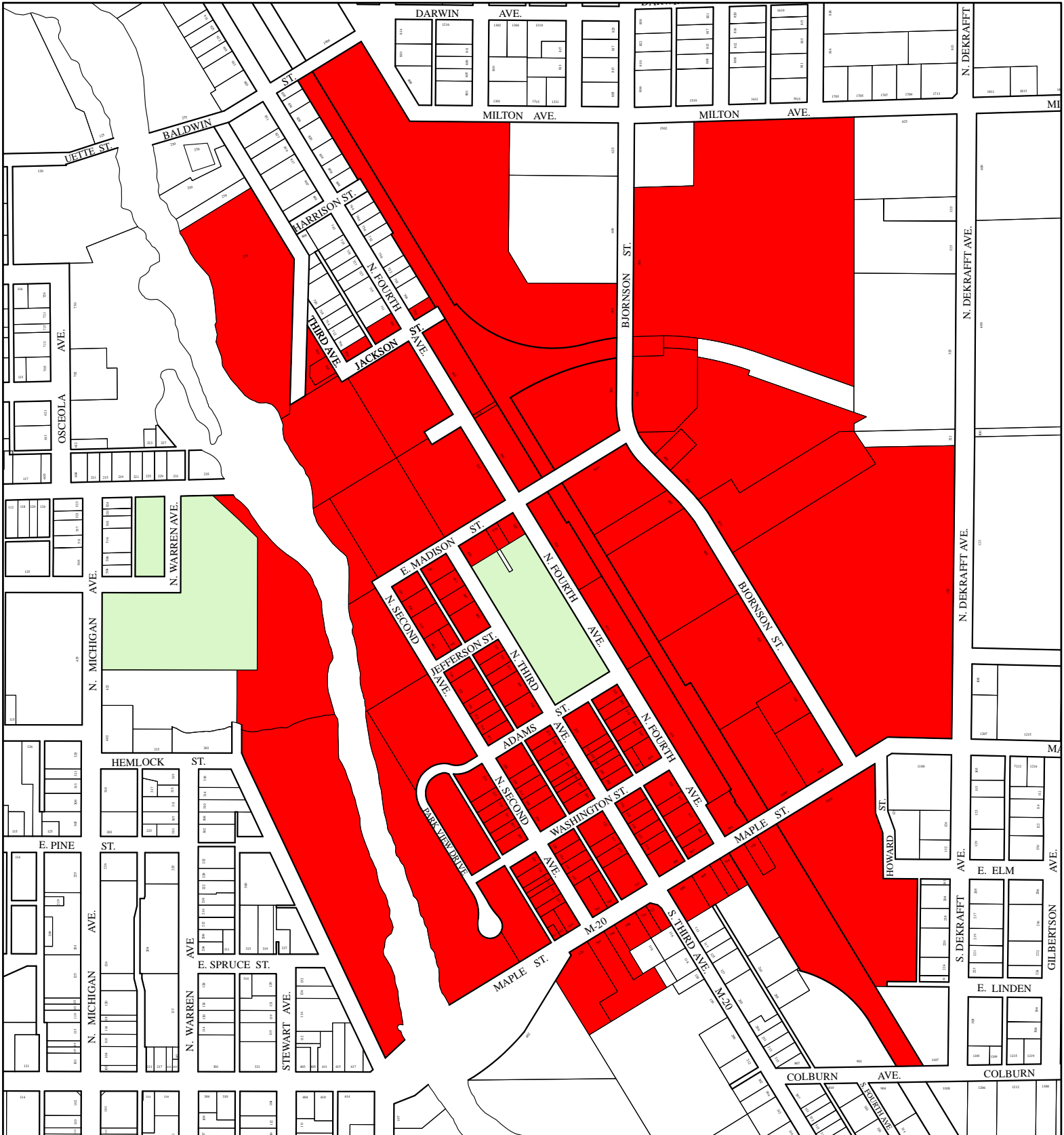



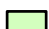
- Red highlight represents 1000' radius from the edge of the school's parcel boundary
- Green represents school property

Student Safety Zones Eastwood Early Childhood Center

410 North Third Avenue Big Rapids, Michigan 49307

Michigan law prohibits a person who has committed a sexual offense from living, working, or loitering within 1000 feet of a public or private elementary or secondary school (exceptions do exist please see section 28.734 of Act 295 of the Michigan Sex Offender Registration Act). These restrictions apply during the twenty-five years an offender is on the Sex Offender Registry.



-  Red highlight represents 1000' radius from the edge of the school's parcel boundary
-  Green represents school property

Student Safety Zones

Crossroads Charter Academy

215 Spruce Street Big Rapids, Michigan 49307

Michigan law prohibits a person who has committed a sexual offense from living, working, or loitering within 1000 feet of a public or private elementary or secondary school (exceptions do exist please see section 28.734 of Act 295 of the Michigan Sex Offender Registration Act). These restrictions apply during the twenty-five years an offender is on the Sex Offender Registry.



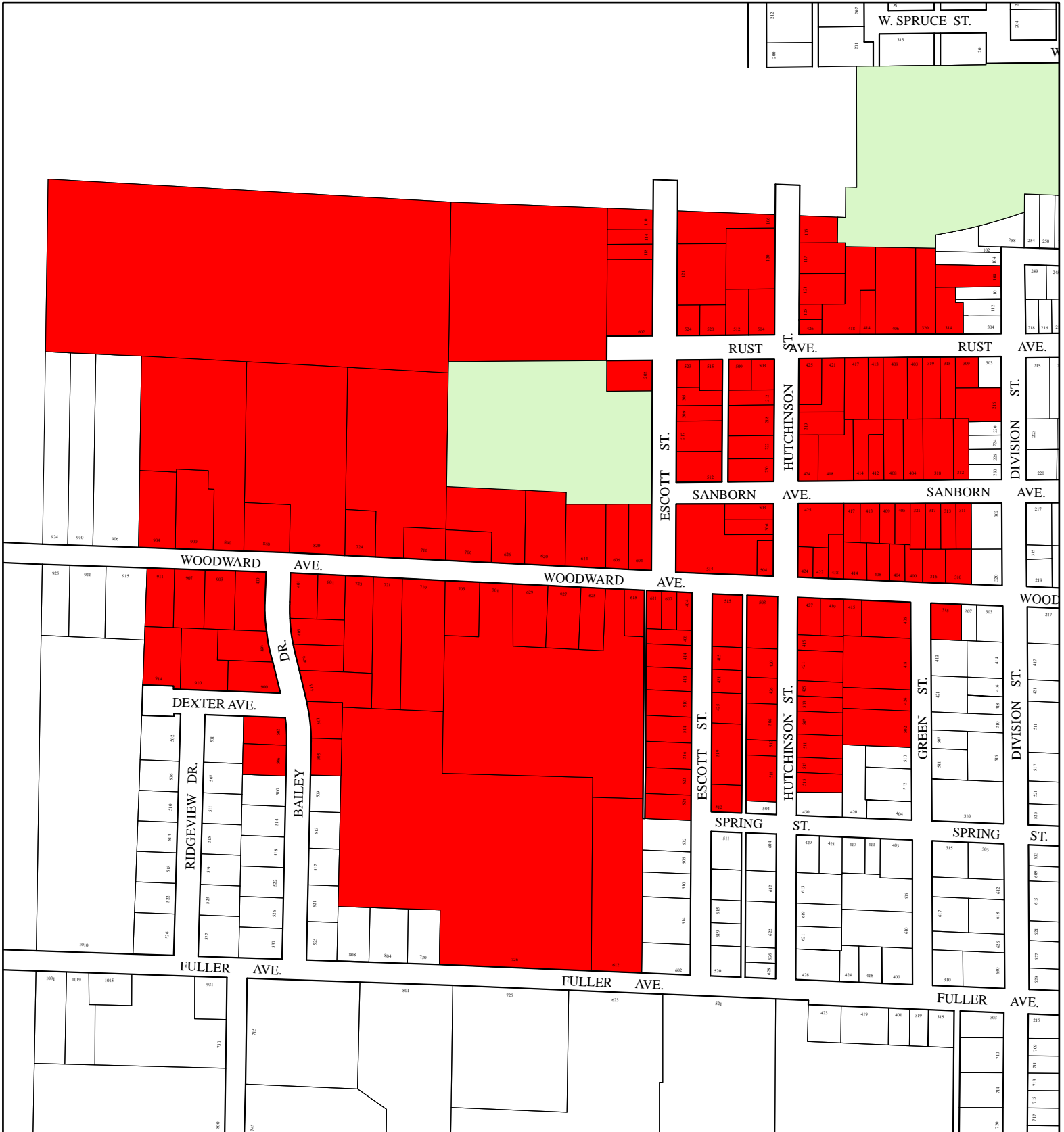
- Red highlight represents 1000' radius from the edge of the school's parcel boundary
- Green represents school property



Student Safety Zones

Brookside Elementary School

210 Escott Street Big Rapids, Michigan 49307

Michigan law prohibits a person who has committed a sexual offense from living, working, or loitering within 1000 feet of a public or private elementary or secondary school (exceptions do exist please see section 28.734 of Act 295 of the Michigan Sex Offender Registration Act). These restrictions apply during the twenty-five years an offender is on the Sex Offender Registry.

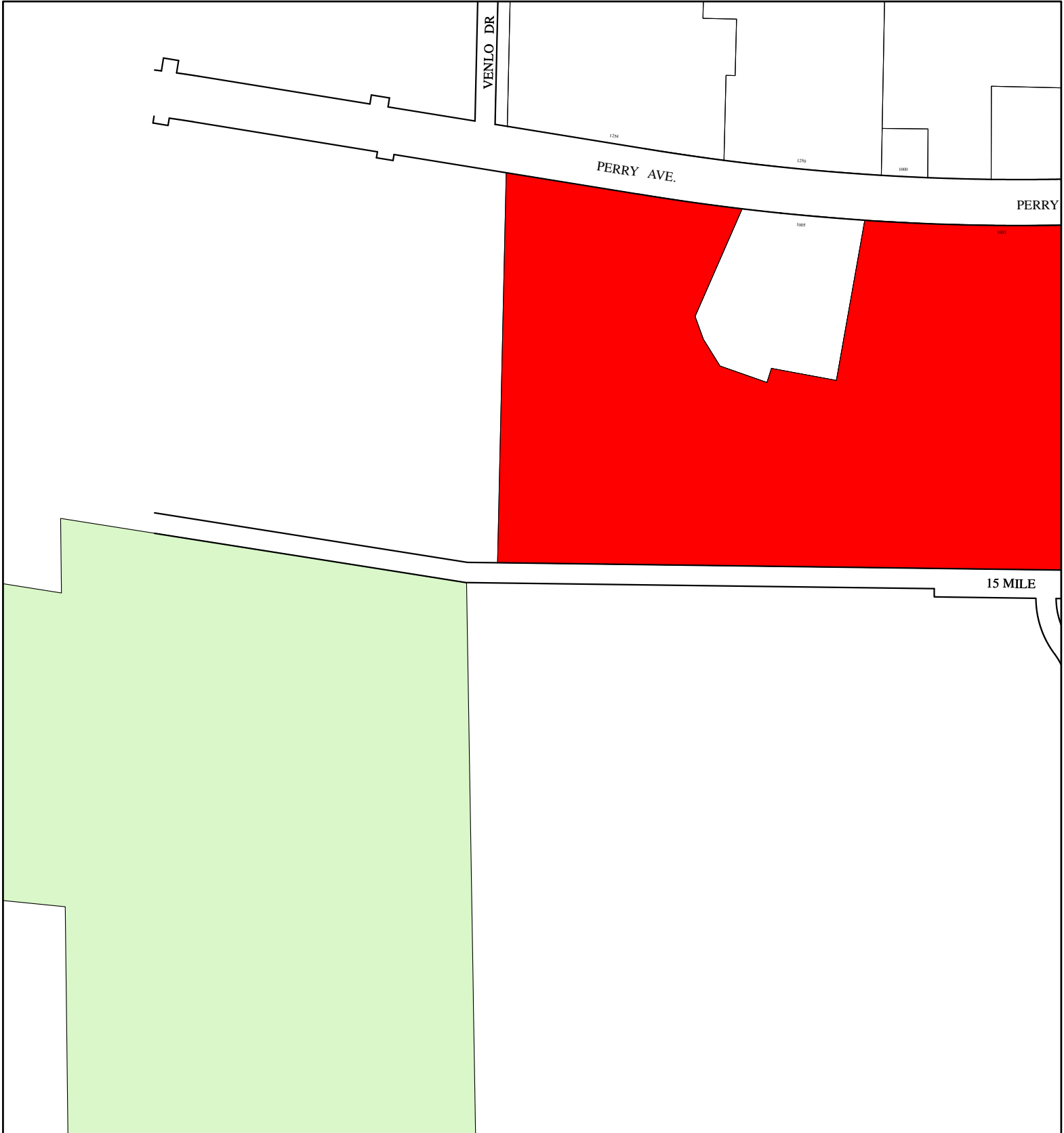


-  Red highlight represents 1000' radius from the edge of the school's parcel boundary
-  Green represents school property

Student Safety Zones Big Rapids High School

21175 15 Mile Road Big Rapids, Michigan 49307

Michigan law prohibits a person who has committed a sexual offense from living, working, or loitering within 1000 feet of a public or private elementary or secondary school (exceptions do exist please see section 28.734 of Act 295 of the Michigan Sex Offender Registration Act). These restrictions apply during the twenty-five years an offender is on the Sex Offender Registry.



- Red highlight represents 1000' radius from the edge of the school's parcel boundary
- Green represents school property